



# ADELANTE!

The Newsletter of NHSN  
SRTI Fellows

Volume 2, Issue 1

March, 2008

## THE NEWSLETTER OF NHSN SRTI FELLOWS

VOLUME 2, ISSUE 1

SPRING 2008

# *Moving the Network Forward*

Avelardo Valdez,  
Division Chair  
University of Houston  
Office for Drug & Social Policy  
Research  
[avaldez2@uh.edu](mailto:avaldez2@uh.edu)

Desiré Martinez,  
Newsletter Editor  
University of Houston  
Office for Drug & Social Policy  
Research  
[dmartin9@Central.UH.EDU](mailto:dmartin9@Central.UH.EDU)

Cristina Mogro Wilson,  
Newsletter Editor  
University of Albany,  
School of Social Welfare  
[cmogrowilson@gmail.com](mailto:cmogrowilson@gmail.com)

Nalini Negi,  
Newsletter Editor  
University of Texas, Austin  
School of Social Work  
[nnegi@mail.utexas.edu](mailto:nnegi@mail.utexas.edu)

Liliane Windsor,  
Newsletter Editor  
National Development & Re-  
search Institute, Inc.  
University of Texas, Austin  
School of Social Work  
[liliw@mail.utexas.edu](mailto:liliw@mail.utexas.edu)

### Inside this issue:

Fellows update	1
Fellows' Corner	2
Recent Publications	3
Announcements	4
Where we go from now	5

## Message from the Editors:

Dear NHSN SRTI Fellows:

It is with great joy that we bring you the second issue of Adelante: The NHSN Summer Research Training Institute Fellow Newsletter. There are approximately 100 SRTI fellows and it is Adelante's goal to keep us in touch while fostering potential partnerships in Hispanic drug use research.

We are very excited about the significant increase in fellows' contributions in the current issue. We heard from many people, both nationally and internationally! Thank you for your interest and congratulations on your many accomplishments!

2008 brings many significant changes to Adelante. First, the current Adelante editors will be stepping down to give other fellows the opportunity to participate. Thus, we are asking those of you who would be interested in becoming the new editor(s) of Adelante to nominate yourselves. Please e-mail Liliane Windsor at [liliw@mail.utexas.edu](mailto:liliw@mail.utexas.edu) to let her know you are interested or if you have any questions.

The second significant change is that our dear Adelante coordinator, Evélio Escamilla, has stepped down from his position to explore other opportunities. While we were sad to see Evélio go, we are excited to introduce Desire Martinez, our new coordinator. She has played a critical role in developing this issue. Below Desire shares a little about herself:



"Hello everyone! As the new NHSN Project Coordinator for the Summer Research Training Institute (SRTI), I will be playing an important role in keeping the network updated and getting everyone involved. I graduated Magna Cum Laude from the University of Houston in 2007 with a BA in Psychology. My plans are to pursue a M.S.W. here at the University of Houston this coming August. My interest in Hispanic drug use began in Puerto Rico and later intensified after drug abuse hit real close to home. This is why I am very excited to be working with some of the best Latino drug researchers in the nation. I know that this network of drug-use experts can really make a difference in the Hispanic community...my community. I look forward to meeting you at the NHSN Summer Institute!"

The third change is the inclusion of a new, permanent section in the newsletter where fellows will have the opportunity to share their thoughts, seek collaboration, recognize contributions from others, and highlight important issues relevant to Hispanic drug addiction. We hope this section will be a forum to foster communication among fellows.

Enjoy the current issue, and we continue to encourage you to speak up! Let us know what you are up to and how you would like to participate!

## NHSN Conference and STRI!

Here are some photos from STRI and NHSN Conferences. We hope to see you this year at the 2008 conference. Remember that NHSN provides funding for junior members to attend!



## Fellows Corner!

By Carlos Rios Bedoya

### NHSN Fellow (2005)

Every year the Office of Applied Studies (OAS) of the Substance Abuse and Mental Health Services Administration (SAMHSA) conducts the National Survey on Drug Use and Health (NSDUH). This is a valuable and rich source of information on drug abuse and dependence among the United States population 12 years of age and older. A publicly available data file is posted every year on the Interuniversity Consortium for Political and Social Research (ICPSR) website for researchers and other parties interested in legal and illegal drug-use patterns and trends in the US. Among the many variables collected in this annual survey is the race/ethnicity of the respondent. This variable is provided in the public data file using broad ethnic categories (i.e., White, African Americans, Hispanics, and Others). But this wasn't always the case. Before 1999, race/ethnicity information was provided using a more detailed classification. The categories up to 1998 were Whites, African Americans, Mexican Americans, Puerto Ricans, Cubans, Central/South Americans, and Others. Furthermore, SAMHSA still collects race/ethnicity information with such a detailed categorization. Evidence to support this statement includes a report on smoking and ethnicity that uses detailed ethnic categories in the United States. The study analyzes NSDUH data from the years 2002-2004 (NSDUH Report, 2006). In contrast, other nation wide and federally-funded surveys provide information on race/ethnicity at this level of detail or even more (e.g., NESARC, NLAAS). Several attempts have been made to ask SAMSHA for this variable, either to include it in the public data file or to provide it upon request to researchers after signing a confidentiality agreement. These attempt were unsuccessful and SAMHSA did not explain why it is not authorized to provide this level of detail, especially when other surveys do.

For those of us interested in drug abuse and dependence patterns, predictors, and suspected causal determinants among Hispanics, this level of detail represents a very important piece of the puzzle for examining intra-ethnic differences among Hispanic subgroups. **Continued on page 4...**

## Fellows Corner!

**By Freddie Deleon**

### NHSN Fellow (2002)

“The National Hispanic Science Network is an organization that has been very influential in my life. In 2002, I was provided a scholarship that allowed me to participate in the NHSN Research Training Institute in Houston, Texas. That same year (2002) in May, I had just completed my Master’s in Social Work and really did not know exactly what type of career I would follow. My main goal was to complete my Doctorate in Social Work, but financially speaking I could not acquire the necessary funds to reach my goal. I worked as a domestic violence counselor, bilingual service coordinator, crisis intervention specialist, assistant program director, research assistant, interim program director, gang intervention specialist, and various other part-time positions. In July of 2007, I ran into some major obstacles that not only reminded me of the 1960’s, but also brought up many memories of the racism, discrimination, and oppression I had experienced and witnessed as a Mexican-American male growing up in Houston. The inability to resolve or overcome those obstacles obscured my perception of a progressing society. I not only began to relive many of the negative experiences of my past, but began to question whether modern day society was in a regressive state. Then, to add to the frustration, I was unable to find employment for over four months.

Out of the blue I received an email from the National Hispanic Science Network asking me to provide an update on my current status. I complied and sent information on what was going on in my life at that time, and also asked if the NHSN had any information on the availability of employment. I promptly received a response from Dr. Avelardo Valdez and was asked to come see him. I did so immediately, and he provided me an opportunity to become part of his research team. I currently work for the Office for Drug and Social Policy Research. Hopefully, I will soon begin the Doctoral Program here at the University of Houston’s Graduate College of Social Work. This has all been the opportunity of a lifetime.

**Thank you NHSN!!!**

*Let us know what you have been up to! If you would like your accomplishments to be featured, please send us a picture and a paragraph with an update of your accomplishments and we will publish it in an upcoming newsletter!*

## Where are they now? Here is an update on NHSN Fellows who kept in touch

Vera Lopez, Ph.D.:  
(picture to the right) Dr. Lopez is a 2007 SRTI fellow. She is currently an assistant professor at Arizona State University, School of Justice & Social Inquiry. You can see her recent publications in the next section.



W. Azul La Luz B. M.A., CCHT.: (picture to the left) Mr. La Luz is a 2002 SRTI fellow. He is currently a doctoral candidate at the University of New Mexico in Medical Sociology. Mr. La Luz has recently accepted a position as the Executive Director of Las Cumbres Community Services, Inc., a non-profit organization providing adult services, respite and personal care, child and family services, and early-childhood mental health training to the community.



Barbara Lopez, Ph.D.:  
(picture to the right, below) Dr. Lopez is a 2005 SRTI fellow. She is currently an assistant scientist at the University of Miami, Miller School of Medicine, Division of Cardiology. Her recent publication can be seen in the Fellows Publications section.



**Continued on page 4...**

## Fellows Corner!

**Continued from page 2...** The National Latino and Asian American Study (NLAAS) has provided strong evidence for the diversity present among Hispanics with respect to mental health status and service utilization. But, even though both the NLAAS and the National Epidemiological Survey on Alcohol and Related Conditions (NESARC) provide drug abuse and dependence data, and detail race/ethnic classification, the minimum age to be eligible to participate in these surveys was 18 years. Unfortunately, legal and illegal drug initiation takes place during late childhood and early adolescence. In contrast to the NESARC and the NLAAS, the minimum age to participate in the NSDUH is 12 years. Thus, the NSDUH is the only annual population-based survey with which it is possible to study the developmental period where all the legal and illegal drug opportunities, sampling, initiation, and transitions to abuse and dependence can be examined. Hispanics are the largest and fastest growing minority in the U.S. and have the highest fertility rate. Policy makers need to be informed about the diversity among Hispanics and how this diversity relates to differences in drug use and abuse patterns. Furthermore, this diversity might also impact prevention and treatment efforts targeting Hispanics that are developed and implemented under the assumption of a homogeneous group. The mission and goals of the National Hispanic Science Network on Drug Abuse positions it to assume a leadership role in this initiative and recruit other organizations that share similar missions to join in this effort. We must face this task with a collectivity of purpose and commit to speak with one voice—a voice so loud that it will compel people to listen and recognize the importance of granting access to a more detailed classification of race and ethnicity.

### REFERENCES

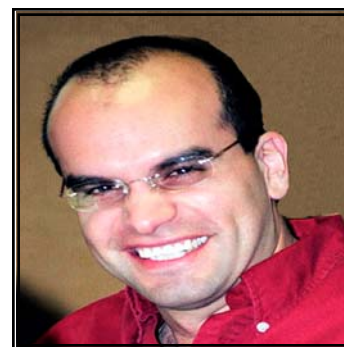
Past month cigarette use among racial and ethnic minorities. NSDUH Report (Issue 30, 2006). Accessed December 19, 2007, at: <http://www.oas.samhsa.gov/2k6/racecigs/racecigs.htm>.

Continued from page 3...

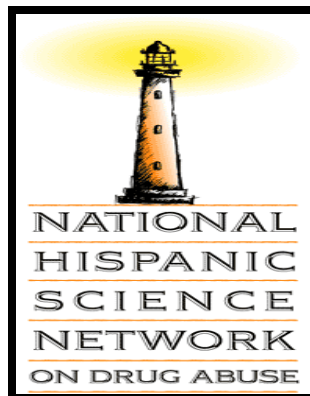


Tanya Nieri, Ph.D.: (picture to the left) Dr. Nieri is a 2004 SRTI fellow. This Fall, she will leave her current assistant professor position at Arizona State University to take another assistant professor position in the Department of Sociology at the University of California, Riverside. She will be affiliated with the Presley Center for Crime and Justice.

J. Ruben Parra Cardona, Ph.D.: (picture to the right) Dr. Parra Cardona is a 2005 SRTI fellow. He is currently assistant professor at Michigan State University, Marriage and Family Therapy Program, 3 D Human Ecology. His contributions can be found in the Recent Fellows' Presentations and Publications section.



Emily Prieto, Ph.D.: (picture to the left) Dr. Prieto attended the institute in 2004 when she was a Ph.D. student. She received her doctorate in education with a specialization in language, literacy and culture this past July, 2007. Currently, Dr. Prieto is the Director of the Latino Resource Center at Northern Illinois University. According to her: "One of the most critical aspects of my position is ensuring that there is a welcoming and supportive environment for the Latino campus community and to develop program initiatives that enhance the undergraduate experiences of Latino students, including areas of service learning and community activism."



Continued on page 5...

Continued from page 3...



Carlos F. Ríos-Bedoya, M.P.H., Sc.D.: (picture to the left) Dr. Ríos-Bedoya is a 2005 SRTI fellow. Currently he is an assistant professor at Michigan State University, Department of Family Medicine. You can see his contribution in the Fellow's Corner.

Anna Robert: (picture to the right) Ms. Robert is a 2007 international fellow of the SRTI. She is currently a doctoral student at the University of Barcelona, Department of Behavior Sciences. She works as a clinical psychologist in an Addictive Behaviors Treatment Unit which depends on the Department of Psychiatry at the Hospital de la Sta Creu i St Pau (Barcelona, Spain). Her current research areas include addictive behaviors (substance abuse, gambling, etc.) and mental health among Spanish populations.



Stephanie, Rivaux: (picture to the bottom left) Stephanie is a 2004 SRTI fellow. She is currently a doctoral candidate at the University of Texas at Austin, School of Social Work. Currently, she is working with a national team looking at issues of disproportionality in child welfare. She is also a statistics consultant for a faculty member at Jane Addams School of Social Work on another disproportionality project. You can find her contributions in the Recent Fellows' Presentations and Publications section.



Continued on page 6...

## Recent Fellows' Presentations

- Gilbert, D.J. & **Negi, N.J.** (2007). Internationalizing Social Work Curriculum: a Case Study of Challenges and Successes. Poster presentation at the Annual Planning Meeting (APM) CSWE, San Francisco, California, October, 2007.
- Furman, R., Langer, C. Sanchez, T., & **Negi, N.J.** (2007). A qualitative study of immigration policy and anticipated practice dilemmas for MSW Students. Paper Presentation at the Society of Social Work Research (SSWR), San Francisco, California, January, 2007.
- Mogro-Wilson, C.** (2008). The Role of Parenting in Latino Adolescent Alcohol Use. Paper presented at Society for Social Work Research (SSWR), Washington, DC, January 2008.
- Mogro-Wilson, C.** (2007). Latino Family Influence on Adolescent Alcohol Use. Poster presented at National Hispanic Science Network on Drug Abuse (NHSN), Miami, Florida, September 2007.
- Mogro-Wilson, C., Strolin, J., & Matto, H.C.** (2007). Cultural Competence in Research: Methodological Issues for University Collaboration with a Rural Latino Community and Substance Abusing Population. Paper presented at the Diversity Conference: American Dilemmas: Historical and Comparative Perspectives of Diversity, Health Disparities, and Issues of Substance Abuse, University at Albany, Albany, New York, May 2007.
- Negi N., & Windsor, L.** (2008, January). *Poor, Black and Drug Abusing? Examining the Assumption of Drug Prevalence among Impoverished African Americans*. Poster will be presented at the meeting of the Society for Social Work and Research, Washington, DC.

Continued on page 6...

## Recent Fellows' Presentations

**Negi, N.J.**, Bender, K.A., Fowler, D., & Furman, R. (2007). Addressing the Challenges of Teaching Culturally Competent Practice: Sharing Strategies. Paper presentation at the Annual Planning Meeting (APM) CSWE, San Francisco, California, October, 2007.

**Negi, N. J.**, Bender, K., Gerlach, B., & Peacock, T. (All authors contributed equally) (2007). Supervisor effectiveness in child and adult protective services: do resources make a difference. Poster Presentation at the Society of Social Work Research (SSWR), San Francisco, California, January, 2007.

**Rivaux, S. L.**, Hernandez, M. A., & Gerlach, B. (2007, October). *Pre-graduate internships: Creating pathways to diversity in social work education and leadership*. Paper presentation. Council on Social Work Education National Conference, San Francisco, California.

**Robert, A.**, Pascual, J.C., de los Cobos, J.C.P. (2007) "*Comorbidity of pathological gambling with substance use disorders and other mental disorders in a clinical sample from Spain*". Poster presented at the meeting of the National Hispanic Science Network on Drug Abuse, Miami, FL.

Shears, J., Furman, R., & **Negi, N.J.** (2007). The Perceptions of Mexican-American Men as fathers. Paper Presentation at the Society of Social Work Research (SSWR), San Francisco, California, January, 2007

Strolin, J., Matto, H.C., & **Mogro-Wilson, C.** (2007). An Innovative Clinical Practice Intervention with Latino Substance Abusers. Paper presented at the Yeshiva University Wurzweiler School of Social Work 50th Anniversary Conference: Celebrating a tradition of caring, New York, NY, May 2007.

Tiburcio, N., Ricoy, U., Maldonado, A., & **Windsor, L.** (2007, September). *Developing the next generation of research scientists*. Session facilitated at the meeting of the National Hispanic Science Network on Drug Abuse, Miami, FL.

Von Sternberg, K., Carbonari, J. P., Velasquez, M. M., Mullen, P. D., & **Rivaux, S. L.** (2008, January). *A comparison of the factor structure of Transtheoretical Model constructs in substance abuse treatment: Incarcerated and freeworld samples*. Paper presentation. Society for Social Work and Research National Conference, Washington, D.C.

**Windsor, L.** (2007, August) *Breaking free from the ideology of oppression: An in-depth ethnomethodological analysis of racial conditioning among privileged white Brazilians*. Paper presented at the meeting of the Society for the Study of Social Problems, New York, New York.

**Windsor, L.**, & Armour, M. (2007, August) *Pilot evaluation of an in-prison restorative justice intervention*. Paper presented at the meeting of the Society for the Study of Social Problems, New York, New York.

**Windsor, L., Benoit, E.**, & Dunlap, E. (2008, June). "Oppression dimensions in the lived experience of Black women living in distressed households in New York". Paper to be presented at the meeting of the National Women's Studies Association, Cincinnati, OH.

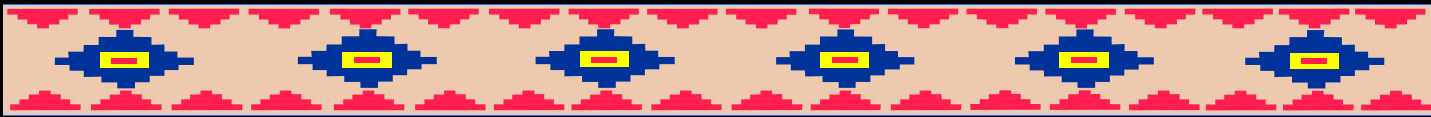


### Continued from page 5

Juan Enrique Huerta Wong, (picture to the left) Ph.D.: Dr. Wong was recruited as an international member for the 2006 NHSN Summer Institute. Currently he is a postdoc scholar at McGill University, Centre for Development Area Studies. His research project is examining how Mexican immigrants build social capital and development through Social Network Analysis. Dr. Wong is Mexican and has a MA in Communication Studies (Mexico, ITESM) and a PhD in Social Work (University of Texas at Arlington). He has lived in three countries during the last three years and his contribution can be found in the Fellow's Corner section.



## Recent Fellows' Publications

- 
- Armour, M. P., **Rivaux, S. L.**, & Bell, H. (in press). Using context to build rigor: Application to two hermeneutic phenomenological studies. *Qualitative Social Work Research*.
- Armour, M., **Windsor, L.**, & Aguilar, J. (in press). *A Multidimensional evaluation of a faith based restorative justice intervention for offenders: A pilot study*. *Christianity & Psychology*.
- Behnke, A. O., Taylor, B. A., & **Parra-Cardona, J. R.** (in press). "I Hardly Understand English, But...": Mexican origin fathers describe their commitment as fathers despite the challenges of immigration. *Journal of Comparative Family Studies*.
- Furman, R., **Negi, N. J.**, & Cisneros-Howard, A. L. (in press). The immigration debate: Lessons for social work. *Social Work*.
- Lopez, B.**, Schwartz, S., Prado, B., Campo, A., & Pantin, H. (in press) "Adolescent Neurological Development and its Implications for Adolescent Substance Use Prevention". *Journal of Primary Prevention*.
- Lopez, V.**, & *Russell, M.* (in press). Examining the predictors of juvenile probation officers' rehabilitation orientation. *Journal of Criminal Justice*.
- Lopez, V.** (in press) Understanding adolescent property crime using a delinquent events perspective. *Deviant Behavior*.
- Matto, H. C., Strolin, J., & **Mogro-Wilson, C.** (in press) A Pilot Study of a Dual Processing Substance Abuse Treatment Intervention with Adults. *Substance Use & Misuse*, 43.
- Mogro-Wilson, C.** (2008). The Influence of Parental Warmth and Control on Latino Adolescent Alcohol Use. *Hispanic Journal of Behavioral Sciences*, 30(1), 89-105.
- Mogro-Wilson, C.**, Strolin, J., & Matto, H. (in press). "A Review of the Literature and Methodological Issues for University Collaboration with a Rural Latino Community and Substance Abusing Population". *Journal of Social Work Practice in the Addictions*, 8(4).
- Parra-Cardona, J. R.**, Sharp, E., & Wampler, R. S. (in press). Changing for My Kid: Fatherhood experiences of Mexican-origin teen fathers involved in the justice system. *Journal of Marital and Family Therapy*.
- Parra-Cardona, J.R.**, Córdova, D., Holtrop, K., Villarruel, F.A., & Wieling, E. (in press). Shared ancestry, evolving stories: Similar and contrasting life experiences described by foreign born and U.S. born Latino parents. *Family Process*.
- Parra-Cardona, J.R.**, Meyer, E.M., Schiamberg, L.B., & Post, L.A. (2007). Elder abuse and neglect in Latino families: An ecological and culturally relevant theoretical framework for clinical practice. *Family Process*, 46, 451-470.
- Parra-Cardona, J. R.**, & Busby, D. M. (2006). Exploring relationship functioning in premarital Caucasian and Latino/a couples: Recognizing and valuing cultural differences. *Journal of Comparative Family Studies*, 37, 345-361.
- Parra-Cardona, J. R.**, Wampler, R. S., & Sharp, E. (2006). "Wanting to be a good father": Experiences of adolescent fathers of Mexican descent in a teen fathers program. *Journal of Marital and Family Therapy*, 32, 215-232.
- Rivaux, S. L.**, James, J., Wittenstrom, K., Baumann, D., Sheets, J., Henry, J., & Jeffries, V. (in press). The intersection of poverty, race, and risk in child welfare: Understanding the decision to provide services to clients and to remove children. *Child Welfare, Special Issue on Disproportionality in Child Welfare*.
- Rivaux, S. L.**, Sohn, S., Armour, M., & Bell, H. (in press). Women's early recovery: Managing the dilemma of substance abuse and intimate partner relationships. *Journal of Drug Issues*.
- Shears, J., Furman, R., & **Negi, N. J.** (in press). The self-perceptions of Mexican American men regarding fatherhood. *Advances in Social Work*.

## Fellow's Publications Continued...

Shorkey, C., Uebel, M., & **Windsor, L.** (in press) Measuring dimensions of spirituality in chemical dependence treatment and recovery: Research and practice. *International Journal of Mental Health and Addictions*.

Shorkey, C., **Windsor, L.**, & Spence, R. (in press). Assessing and developing cultural competence/ relevance in chemical dependence treatment organizations that serve Mexican American clients and their families. *Journal of Behavioral Health Services & Research*

Smith, B.D. & **Mogro-Wilson, C.** (2007). Multi-Level Influences on the Practice of Inter-Agency Collaboration in Child Welfare and Substance Abuse Treatment. *Children and Youth Services Review*, 29(5), 545-556.

Smith, B.D. & **Mogro-Wilson, C.** (in press). "Inter-Agency collaboration in substance abuse and child welfare: Individual-level and organization-level influences". *Administration in Social Work*.

Strolin-Goltzman, J., Matto, H., & **Mogro-Wilson, C.** (2007). "A comparative analysis of a dual processing substance abuse treatment intervention: Implications for the development of Latino-specific interventions" *Hispanic Health Care International*, 5(4), 162-168.

Thompson, S., Bender, K., **Windsor, L.**, Cook, M., Williams, H. (in press) Homeless youth: Characteristics, contributing factors and service options. *Human Behavior in the Social Environment*.

**Windsor, L.** (2007). Deconstructing racial democracy: A personal quest to understand social conditioning about race relations in Brazil. *Social Identities* 13(4), 495-521.

**Windsor, L.**, & Thompson, S. (2007). Educating homeless youth in Texas: The McKinney-Vento Homeless Education Assistance Improvements Act of 2001. *Educação e Realidade*.

## Announcements

*Pre and Post-Doctoral Positions:*

### Behavioral Science Training in Drug Abuse Research

Supports behavioral scientists at the postdoctoral and predoctoral levels to develop research and professional careers in the drug use/misuse and HIV/AIDS. Several former and current fellows are members of the National Hispanic Science Network. Positions at the postdoctoral level are now available until June 30, 2008. Additional positions may be available after July 1, 2008. Please visit our website, [www.ndri.org/jobs/bstinfo.html](http://www.ndri.org/jobs/bstinfo.html), for more information and application instructions.

### Post-Doctoral Fellowship in Culturally-Grounded Health Disparities Research, Arizona State University

2-Year Post-Doctoral Fellowship in Culturally-Grounded Health Disparities Research at Arizona State University, College of Public Programs, Southwest Interdisciplinary Research Center. Applications are invited for fellowship beginning Fall, 2008. The goal of the fellowship is to enhance the research skills of the next generation of health disparities scholars. All candidates must have earned a doctorate within the past five years in social work, sociology, psychology, public health, nursing or a related field, an interest in and commitment to pursuing health disparities research focused on substance use, HIV/AIDS and/or mental health, an interest in intervention research, a publication record commensurate with stage of career development, and a research agenda that has the potential for external funding. Salary is commensurate with qualifications. Applications will be reviewed beginning February 15, 2008. Candidates must submit a letter of interest, CV, names and addresses of three professional references, a statement of research agenda, and two samples of written/published material to: Paul Christensen, Center Manager, Arizona State University, 411 North Central Ave, Suite 720, Phoenix, AZ 85004-0693.

Don't forget to send your nominations for Adelante editor to

Liliane Windsor at [liliw@mail.utexas.edu](mailto:liliw@mail.utexas.edu).

## Announcements

### Postdoctoral Positions in Drug Abuse Research, University of Vermont

The University of Vermont announces the availability of three post-doctoral research fellowships in an internationally recognized center of excellence for the study of drug abuse. Fellows have opportunities for training in a wide range of human laboratory and treatment-outcome research. Current openings are with: STEPHEN HIGGINS ([stephen.higgins@uvm.edu](mailto:stephen.higgins@uvm.edu), 802-656-9614) in delineating behavioral and pharmacological processes central to understanding and effectively treating cocaine dependence as well as cigarette smoking among pregnant women; STACEY SIGMON ([stacey.sigmon@uvm.edu](mailto:stacey.sigmon@uvm.edu), 802-656-9987) in developing (a) an effective pharmacological treatment, using buprenorphine and naltrexone, for prescription opioid abuse and (b) developing a behavioral smoking cessation intervention for opioid-maintained patients. Applicants must have completed doctoral training in behavior analysis psychology, or a related discipline and be U.S. citizens or permanent residents. To apply please forward a curriculum vitae, statement of research interests, and three letters of reference in c/o Ms. Diana Cain, University of Vermont, Dept. of Psychiatry, 1 So. Prospect Street, UHC Campus-OH3-Mail Stop 482, Burlington, VT 05401.

### Postdoctoral Position in Brain Imaging of Drug Abuse, Psychiatry SPECT Imaging Program, Department of Psychiatry, Yale University School of Medicine

The Psychiatry SPECT Imaging Program at Yale invites applications for postdoctoral positions in neuroreceptor imaging of addiction. Ongoing projects include studies imaging GABAA benzodiazepine receptors, peripheral benzodiazepine receptors, and nicotinic cholinergic receptors in living tobacco smokers, alcohol drinkers, and also in animal models of alcohol and nicotine addiction. We are especially interested in applicants who are willing to conduct transdisciplinary research. Applicants must have completed a MD, or PhD or equivalent degree in neuroscience, psychology, biology, chemistry, pharmacology or related discipline. Applicants should send a letter of interest, curriculum vitae, and the names of three references to Dr. Julie K. Staley, Director, Psychiatry SPECT Imaging, Department of Psychiatry, Yale University School of Medicine & VACHS 116A2; 950 Campbell Avenue, West Haven CT 06516 or [julie.staley@yale.edu](mailto:julie.staley@yale.edu).

### Postdoctoral Associate and/or Research Assistant Professor, Department of Pharmacology and Toxicology, University of Utah

Postdoctoral Associate and/or Research Assistant Professor positions in neuropharmacology, with an emphasis on the abuse liability and neurotoxicity of psychostimulants, are available in the Department of Pharmacology and Toxicology at the University of Utah in the laboratories of Drs. Glen R. Hanson and Annette E. Fleckenstein. Applicants for the Postdoctoral Associate position should have a Ph.D. in pharmacology, neuroscience, molecular biology or a related discipline. Applicants for the Research Assistant Professor position should also have a Ph.D. in one of those areas, along with at least 2 years of Postdoctoral experience. Qualified applicants should provide a current curriculum vitae, statement of research interests, and names of at least three references to: Dr. Annette E. Fleckenstein, University of Utah, Department of Pharmacology and Toxicology, 30 South 2000 East, Room 201, Salt Lake City, Utah, 84112. E-mail: [fleckenstein@hsc.utah.edu](mailto:fleckenstein@hsc.utah.edu).

### Postdoctoral Fellowship Training Programs, Center for Alcohol and Addiction Studies, Alpert Medical School, Brown University

The Center for Alcohol and Addiction Studies at the Alpert Medical School of Brown University is recruiting for fellows in two associated postdoctoral fellowship training programs, one funded by NIAAA in alcohol abuse and addictions and one funded by NIDA (pending renewal) in substance abuse. The training programs provide postdoctoral research training for biomedical, behavioral, and social scientists and health care professionals who wish to conduct high quality research in the early intervention and treatment of alcohol and other drug problems. Areas of expertise in the fellowship include behavioral treatments, pharmacotherapy, and the neurobiology and genetics of alcohol and substance dependence. For further details and an application go to <http://www.caas.brown.edu>

## About the Editors



Nalini Negi is a doctoral candidate at the University of Texas at Austin and is currently working on her dissertation on the well-being of Latino day laborers. Nalini has accepted a position at the School of Social Work at the University of Maryland and will be starting in the Fall of 2008.



Cristina Mogro-Wilson, Ph.D.: Dr. Mogro-Wilson graduated from SUNY Albany in May 2007, and is working as Assistant Professor in the School of Medicine, Department of Pediatrics at the University of Connecticut, where she is the Research Director at the Center for Developmental Disabilities.



Liliane Windsor, LMSW: Ms. Windsor is a 2003 SRTI Fellow. She is currently a doctoral candidate at The University of Texas at Austin, School of Social Work, and an investigator at the National Development & Research Institutes, Inc. Ms. Windsor will defend her dissertation in June, 2008 and she has accepted an assistant professor position at Rutgers University: The State University of New Jersey, School of Social Work starting in August, 2008.

**Thank you for your contributions. Adelante!!!!**